



TACCHI
arredamenti
PROGETTAZIONE E DESIGN





With a commercial history of over 26 years, we boast proven experience in tackling a wide range of carpentry jobs and furniture installations, both for luxury retail and residential and hotel sectors.

Indice



01.

Our Values

02.

Knowhow

03.

Timeline

04.

The Team

05.

The Production
Chain

06.

Materials and Technology

07.

Sostenibilità

08.

Press

09.

Portfolio

10.

Awards and Certifications

11.

Our Future Vision

12.

FAQs

01.

Our Values

Backed by its experience and thanks to the organizational competence of its team in the interior design sector, Alberto Tacchi Arredamenti presents itself as a reliable partner for companies and individuals. The constant pursuit of innovation and achieving solutions in line with customer expectations not only represent the starting point but also the ultimate goal of the company.



02. Knowhow



Planning

In the supply process, planning is fundamental. The projects department offers various assistance, from developing ideas for "Concept Stores" to researching innovative technical solutions. Collaboration with architects and designers promotes research and integration of knowledge.



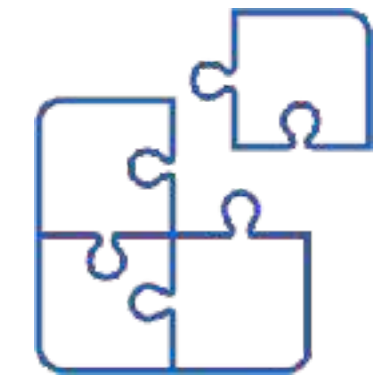
Production

Production combines traditional and innovative materials and technologies. It is a bustling center where skilled craftsmen transform various materials to create exclusive products. Our expertise reflects years of practice and specialization.



Logistics

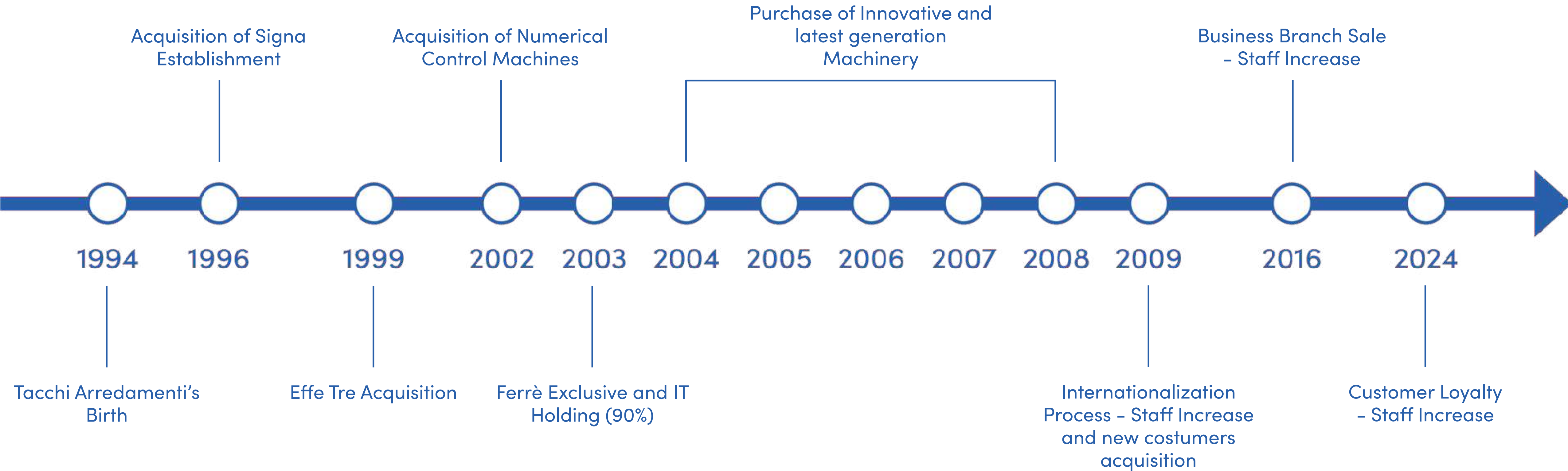
Alberto Tacchi Arredamenti plans logistical operations and takes care of all organizational aspects. Transport is managed directly or in close collaboration with carriers indicated by clients, always with a view to optimizing costs and times.



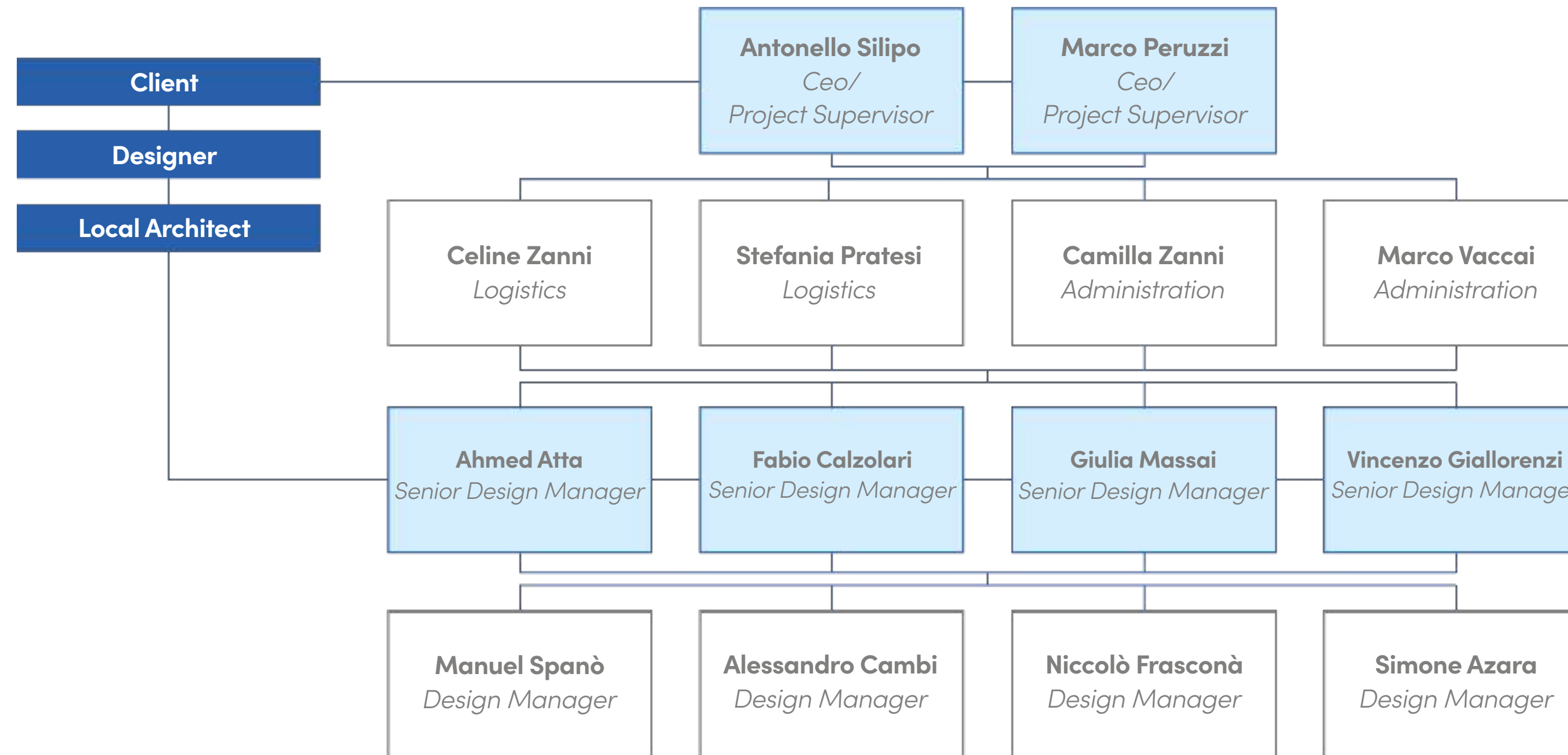
Assembly

Installation activities are carried out by specialized teams, trained by experienced personnel, guided by our project managers who liaise with local contractors.

03. Timeline



04. Team



“Among the traits and skills that lead us to success, passion stands out. Unlike skills, knowledge, or other factors, passion is innate: it cannot be learned or acquired but is always present.”

40 in house
Carpenters / Installers / Decorators / Upholsterers / Conveyor

More than 30
between External Consultants, Graphic Designers, Blacksmiths, Glaziers, Stone Workers, Special Plants Consultants

04. Team

Coordination and Logistics Area

Our team is capable of managing and coordinating contracts and logistical procedures in over 50 different countries. Reactivity and problem-solving are the keywords that allow us to tackle even the most challenging projects.

Design and Management Area

Our project managers and design managers are the link between the client, the architect, and the technical structure, always ready to add corporate value in terms of flexibility and dedication to the project.

Internal Resources

Full dedication to detail and product quality is the common goal for all our carpenters. Engineering, production, and installation are commonly supervised by the same factors.

Reliable Consultants and Partners

Our chain of partners and suppliers is the result of years of collaboration. The common factors we share with all of them are: dedication to the project, the best flexibility, and attention to commitments.

05. La Catena di Produzione



RESPONDING TO MARKET DEMANDS

We have introduced technology into our company that allows our technicians to evolve through a change that simplifies, monitors, and optimizes production phases. Playing a leading role in the Inchsary 4.0 revolution means knowing how to achieve maximum efficiency and quality.

05. La Catena di Produzione

Gran Bretagna

London - Pomellato,
Alexander McQueen,
Gianfranco Ferrè, DODO

Russia

Moscow - Tiffany,
Ermano Scervino

Nord America

Los Angeles - Pomellato, Fendi
Chicago - Pomellato
NYC - Gianfranco Ferrè, Malo,
Ermano Scervino, Fendi
Las Vegas - Pomellato, Fendi

America centrale

Mexico City - El Palacio de Hierro,
Pomellato
Santa Fè - DODO

Francia & Princ. di Monaco

Paris - 55 Croisette, Tiffany Rue de la Paix,
Pomellato, Pucci, Ermano Scervino
Cannes - 55 Croisette, Malo Stand, Ferrè
Montecarlo - Ferrè
Saint Tropez - 55 Croisette

Sud Africa

Città del Capo - Pomellato

Medioriente

Dubai - Pomellato, Pucci
Doha - Ermano Scervino, Fendi

Asia

Cina - Pomellato
Giappone - Pomellato
Corea - Pomellato
Singapore - Pomellato

Svizzera

Geneva - Pomellato, Tiffany
Zurich - Pomellato, Tiffany

Germania

Munich - Gianfranco Ferrè, Pomellato
Hamburg - Pomellato
Dusseldorf - Pomellato

Spagna

Madrid - DODO, Bottega Veneta, Fendi
Barcelona - Ermano Scervino

Italia

Porto Cervo - Alviero Martini, Hermes
Bologna - DODO
Torino - Ferrè
Palermo - Alviero Martini
Venice - Tod's

Forte dei Marmi - Tod's, Ermano Scervino
Florence - Pomellato, Pucci, DODO, Hermes
Milan - Alexander McQueen, Alviero Martini,
Hogan, Malo, Gianfranco Ferrè, The Bridge, DODO,
Tod's, Acqua di Parma
Rome - Hogan, Ermano Scervino, DODO, Alviero
Martini, Acqua di Parma, Ferrè



06. Materiali e Tecnologie

ALCUNI DEI NOSTRI MACCHINARI:

- ROVER C6 cnc processing centre
- AKRON 843 Electronite control unit
- SELCO WNO Panel saw integrated robot system
- SIC TS. 110 Toupie spindle moulder machine
- OPERA 5 wood finishing centre
- ROVER Bene processing centre
- ALTENDORF F45 sliding table saw
- SAC ESSB - wood thickness planer



07. Sostenibilità

All waste materials produced during the production cycle are not lost, as through our suction and storage plant we have managed to create a virtuous process, namely the wood and other assimilable materials, are sucked, processed to then be transformed into pellets. All the material is recovered inside nr.3 containers present in the company, which are periodically collected by the company VALORI FRANCO & C. SRL of Cascina (PI), which simultaneously releases an equal number of empty ones, so that the material recovery process is never interrupted.

All our raw material suppliers (ex (CENTRO LEGNO SNC - LE.CO SRL), such as wood and veneers in various essences, are certified in environmental respect and sustainable material procurement.

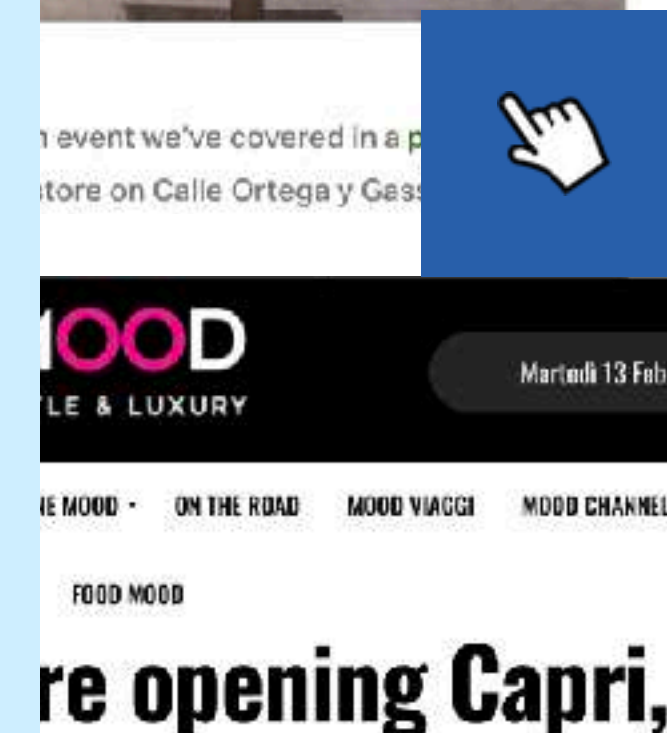
08.

Stampa

Video

The Alexander McQueen store concept by architect Smiljan Radic

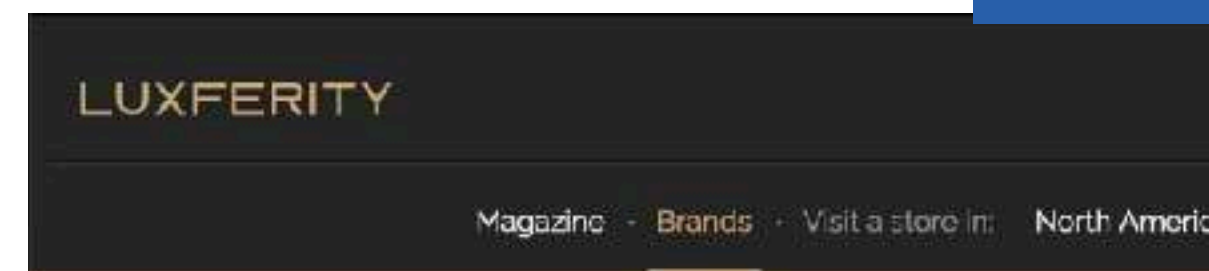
Pomellato Boutique New Opening in Rome



Alexander McQueen apre uno store sull'isola di Capri, Italia, il cui progetto di design nasce dalla collaborazione tra il direttore creativo Sarah Burton e l'architetto Smiljan Radic.

Uno spazio unico che si estende su 39 metri quadrati e ospita le collezioni donna prêt-à-porter e accessori.

Attingendo al fascino per la natura, che è alla base dei valori



Alexander McQueen Brand

Alexander McQueen Opens New Store On Capri Island In Italy

Luxferity, 18.05.2022

Brand news



Alexander McQueen, New Store On Capri, Italy

09.

Portfolio



09.



09.



10. Riconoscimenti e Certificazioni



**Customs Exporters
Registry (REX)
Certificate**



**Economic Operator
Registration and
Identification (EORI)
Code**



**Authorized Exporter
Declaration**



**Extension of Authorized
Exporter Declaration for
South Korea**

11.

Our Future Vision

The future vision is to update ourselves as much as possible, also updating the various employees; purchasing other latest generation machinery and becoming as competitive as possible both in terms of quality and specialized personnel.



12. FAQs

- *"Is it possible to have an 'emergency response' for any problems?"*

Yes, customer assistance is available 24 hours a day, 7 days a week.

- *"What does assistance consist of?"*

Assistance consists of following the customer from the initial phase to shipment and monitoring of the crates until assembly on-site.

- *"Do we need to rely on third parties for assembly?"*

No, having various teams of specialized workers, our goal is to send to the site the people who have dealt with pre-assembly in the company.

Contatti



ALBERTO TACCHI ARREDAMENTI SRL

Via Salvador Allende 11, 50058 - Signa (FI)
+39 055 876456

Email:
info@tacchiarredamenti.it

P.I. 06686240489 - REA: FI-648397

